

Review of the previous residents' workshops June and July

Naoko Fukami
JSPS Cairo Research Station

• **Residents' workshops, first series, theme Traffic issues**

26 June Men

27 June Women

• **Residents' workshops, second series, theme Garbage problems**

23 July Women

24 June Men

date				facilitator	local
26	June	men	A	4	5
			B	3	3
27		women	A	5	7
			B	5	7
23	July	women		7	5
24		men	A	9	8
			B	7	7

Traffic in Darb al-Ahmar, its problems and solutions

Tuk-tuks as a cause of congestion

Methods such as regulations, one-way streets, pedestrian zones, community buses, municipal bicycles, timing services vehicles, station for buses (communal and touristic) at the periphery at a drop up location(s)

Discarding cars obsolete and non-working cars from occupying the streets.

How to deal with all the workshops for the Tuk-Tuks which are occupying large spaces in the streets

The new urban code to enforce an underground parking in new construction.

The use of bollards to ban vehicles to access some alleys and streets, but allows cars with permissions (residents, disabilities, others...).

Passage with commercial vehicles in workshops

Passage of emergency vehicles, ambulances, fire engines, etc.

Whether the method of road extension fits in with the historic city

What are the benefits for residents

Relaxation of urban planning restrictions. Cars will be lined up where they are lowered.

Where houses are removed, they become parking lots.

The historic landscape is destroyed.

Problems

Group (A)

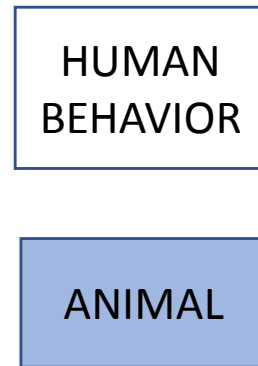
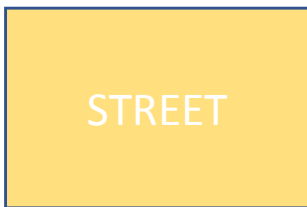
Prof. Salah Zaki, Faima Abd El-Wahed
Ahmed Sedqi, Sarah Faye

Names

Hussian Sayed
Ahmed Amer
Mohsen Zakrya
Muhammed Reda
Belal Maher

Soft

Hard



PROPLEMS

MEN

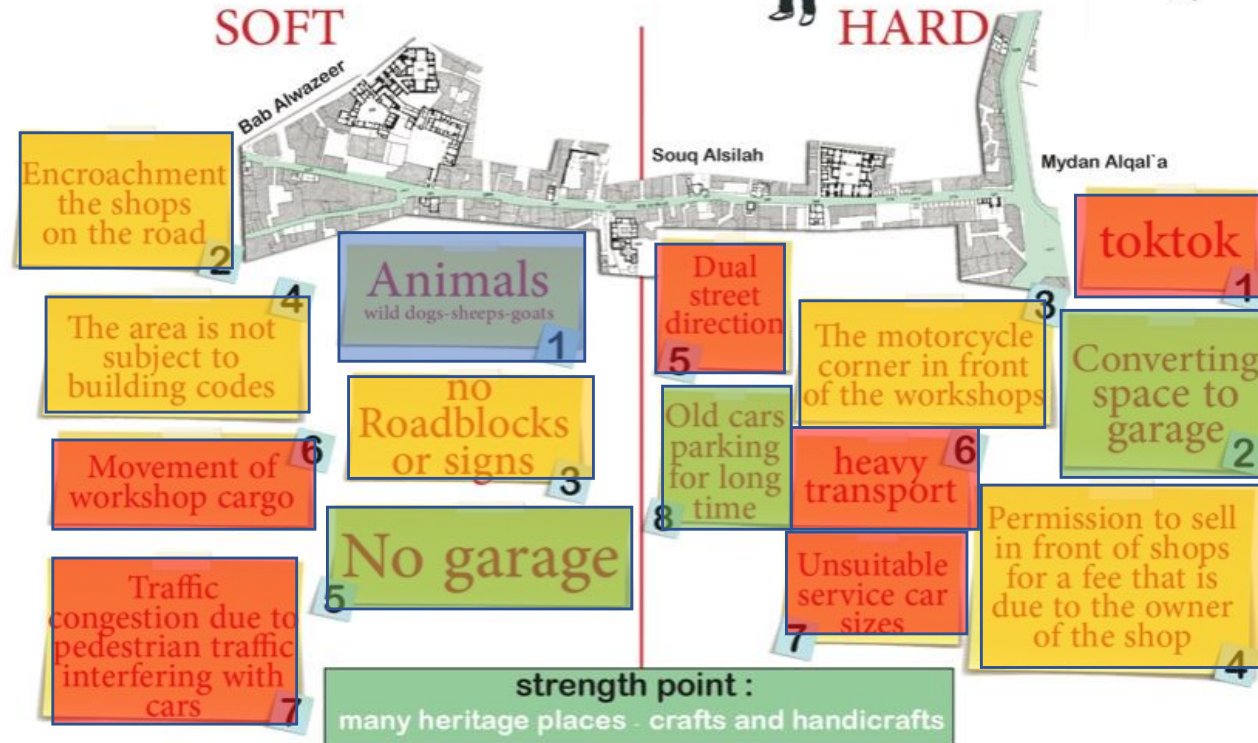
groupB



Names :
facilitators
PROF. Alaa Alhabashy
Eng. Yasmeen Hesham
Eng. Hajar Taariq
community presence
Hamdi
Hany

SOFT

HARD



Solutions

Group (A)

Prof. Salah Zaki, Faima Abd El-Wahed
Ahmed Sedqi, Sarah Fayez

Names

Hussian Sayed
Ahmed Amer
Mohsen Zakrya
Muhammed Reda
Belal Maher

Soft



Hard



SOLUTIONS

MEN
groupB



HARD

Names :
facilitators
PROF. Alaa Alhabashy
Eng. Yasmeen Hesham
Eng. Hajar Taariq
community presence
Hamdi
Hany

SOFT



2

Cross the road
limit only in
the morning



put
a suitable rules
for the area

4

Using surrounding
side streets to
reduce traffic

6

Determine the
pedestrian hours
between morning
and evening

7

Bab Alwazeer



Animal
Shelter

out of souq alsilah

1

Roadblocks
signs

3

weekend
craft Markets
in garage areas

5



Souq Alsilah

one
way

5

Remove
Old
cars

8



suitable service
car sizes or
human help

7



Multi-storey
garage

6



no heavy
transport

3

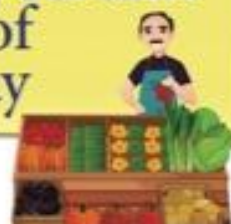


Reuse
the areas
to suitable
garage

2

Shops cross the
road limit
during certain
times of
the day

4



stations

1



Mydan Alqal'a

strength point :
many heritage places - crafts and handicrafts

Problems

Group (A)

27-7-2022

Prof. Salah Zaki, Faima Abd El-Wahed
Omnia Sherif, Yasmin Nasr,
Rasha Abd El-Rasoul

Names

Mennat Allah Tareq
Wafaa Ahmed
Nashwa Abdulfatta
Nesreen Muhamma
Dina Ahmed
Azza Shawqi
Rihab Abdul Razzac

Hard

Soft



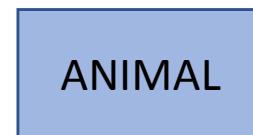
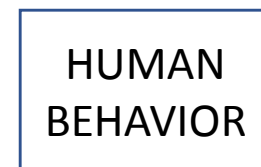
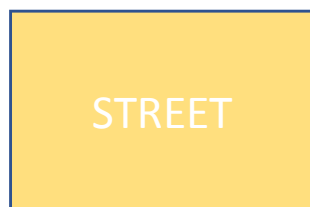
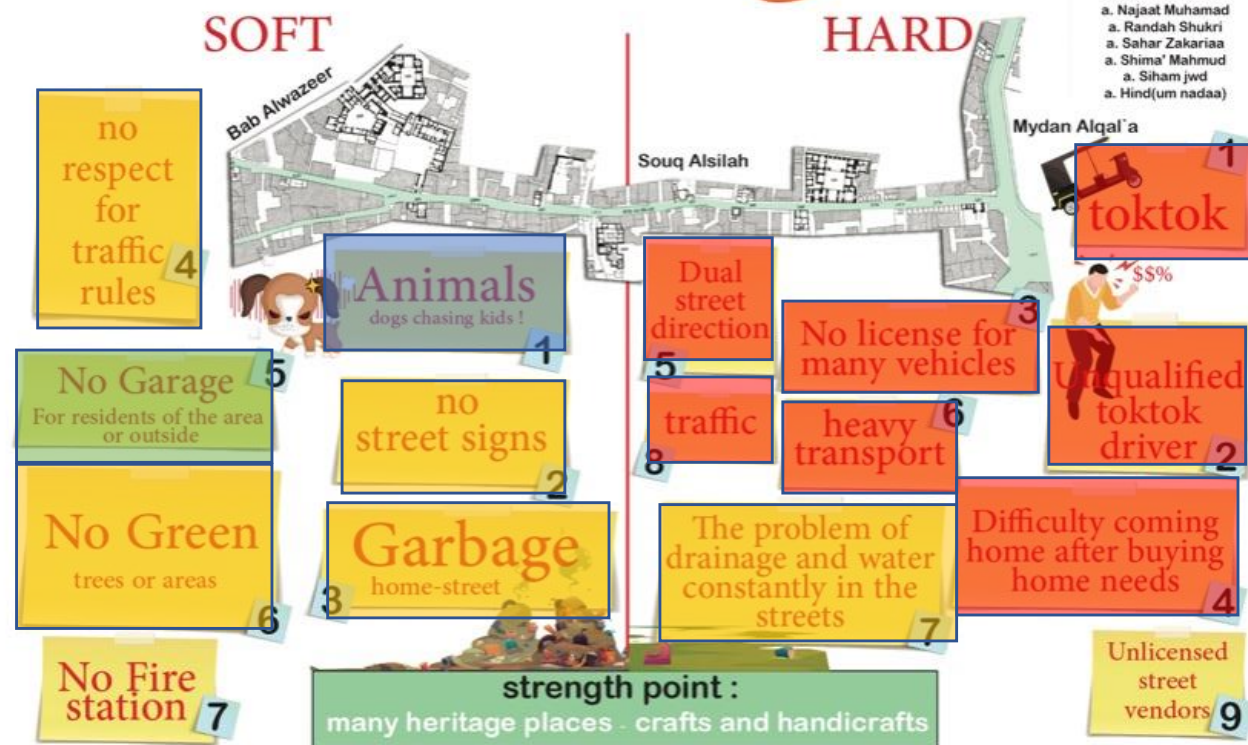
PROPLEMS

ladies

groupB



Names :
facilitators
PROF. Alaa Alhabashy
Eng. Yasmeen Hesham
Eng. Hajar Taariq
Eng. Amnia sharif
community presence
a. Amil Musead
a. Najaat Muhamad
a. Randah Shukri
a. Sahar Zakariaa
a. Shima' Mahmud
a. Siham jwd
a. Hind(um nadaa)



Solutions

Group (A)

Prof. Salah Zaki, Faima Abd El-Wahed
Omnia Sherif, Yasmin Nasr,
Rasha Abd El-Rasoul

Names

Mennat Allah Tareq
Wafaa Ahmed
Nashwa AbdulFattah
Nesreen Muhammad
Dina Ahmed
Azza Shawqi
Rihab Abdul Razzaq

Soft



Hard



SOLUTIONS

Ladies
groupB



Names : facilitators

PROF. Alaa Alhabashy
Eng. Yasmeen Hesham
Eng. Hajar Taariq
Eng. Amnia sharif
community presence

a. Amil Musead
a. Najaat Muhamad
a. Randah Shukri
a. Sahar Zakariaa
a. Shima' Mahmud
a. Siham jwd
a. Hind(um nadaa)

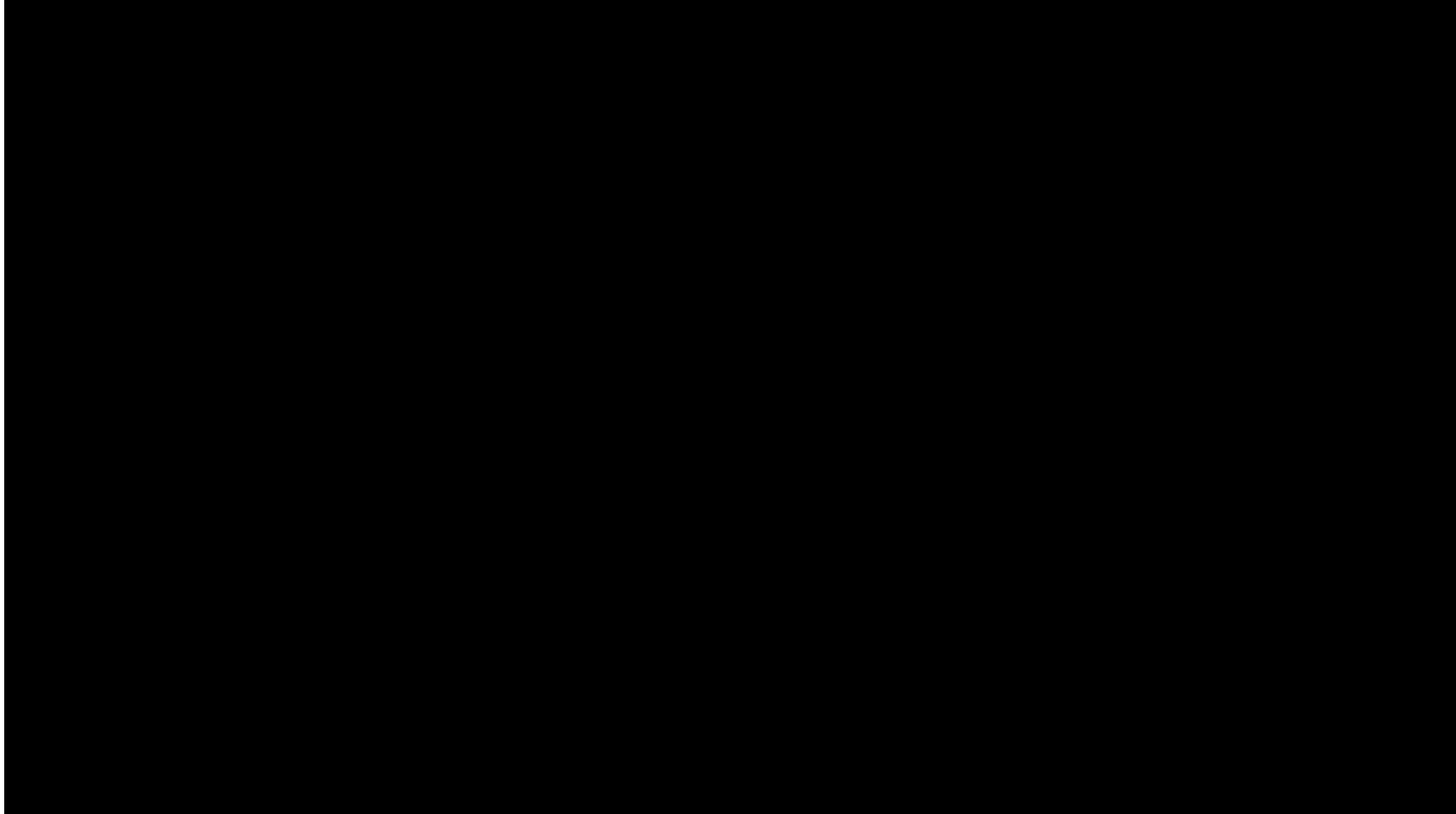
SOFT

HARD



Garbage collection as a waste management in Souq al-Silah Street, Historic Cairo

- Lands of ruined buildings as garbage collection, or rather to litter in, for immediate overlooking neighbors. Bayt Yakan used to be an example of such practice.
- Pros and cons of door-to-door garbage collection versus bringing garbage to a dedicated garbage station,
- What is “Garbage” from the local perspective? Would it be materials that are not of our use? What about the others’ uses? Can we circulate “unused material” among community members before we decide to throw things away? Does this contradict with the belief that one should not give away things that he or she would not use or consume himself or herself?
- Garbage collection station: location, design, and operational guidelines to minimize the negative impacts.
- Sorting garbage is a personal, familial, communal, business, or a state mandate?
- Can we revive traditional garbage recycling system(s), such as the burning of garbage in the furnaces of hammams (public baths) to heat water, but also to produce ash to be used in construction?
- Who makes garbage bags? Shall they be plastic? Can we make our own garbage bags? Do we need garbage bags?
- The assessment of the current system of garbage collection in Souq al-Silah area.
- The accumulated garbage as an incubator of diseases, unpleasant odor, habitats of harming insects and animals.
- Garbage and wild animals (dogs and cats)
- What is public and private garbage? Is there a public garbage?
- Garbage of active businesses, especially related to food, and garbage of residential units.



(Ladies)Group

Prof. Alaa AL-Habashi
Faima Abd El-Wahed, Jasmin

23-7-2022

Problems

Soft

Hard

Names

Shaimaa Mahmoud
Sahar Zakaria
Aml Mosiad
Seham Goda
Donia Ahmed



Solutions

Soft



(Ladies)Group

23-7-2022

Prof. Alaa AL-Habashi
Faima Abd El-Wahed, Jasmin

Names

Shaimaa Mahmoud
Sahar Zakaria
Aml Mosiad
Seham Goda
Donia Ahmed

Hard



PROBLEMS

MEN
groupA



SOLUTIONS

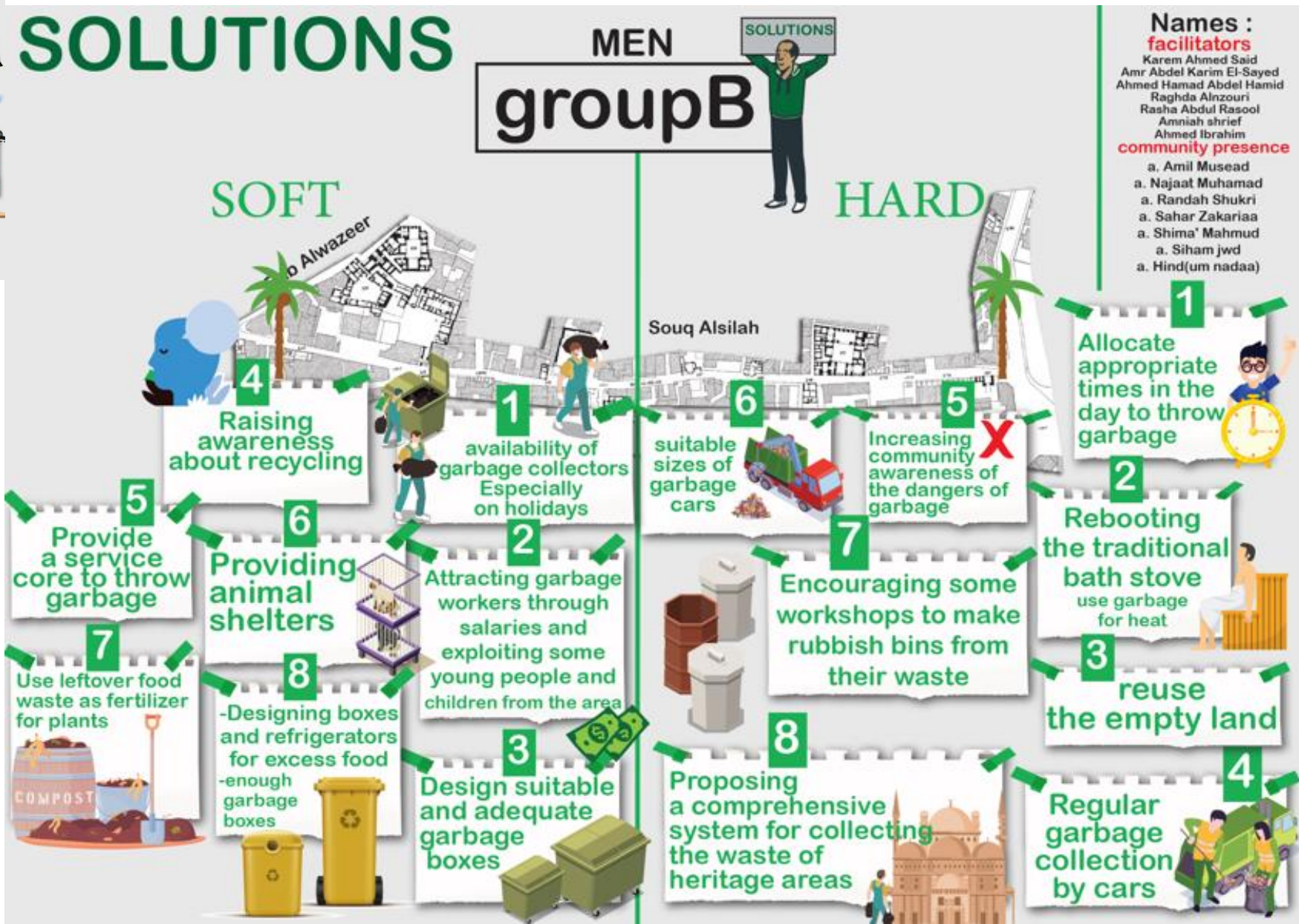
MEN
groupA



PROBLEMS



SOLUTIONS



Many historic cities are random, old and broken, and depending on one's point of view, are lumped together with rubbish and move in the direction of elimination. However, they also contain things that have been cultivated by humans over a long history, and it is not necessarily a good idea to replace them with new ones. It also includes things that, once discarded, can never be restored. The question of how to preserve and utilise them is a challenge for us today. We need to consider how we dispose of waste, while investigating the value of its use and reusing what can be reused.

Overall, we felt that it was difficult to adapt the template of the workshop to Egypt, but at the same time thought that it would be good to devise an Egyptian way of doing things. It was interesting to note from the transport workshop that the issue of litter was raised in terms of streets. It was also interesting to note from the waste workshop that fire risks and the use of vacant lots were pointed out, indicating a deep connection with the August risk management workshop in terms of the residents' own awareness of the issues.